

Form Talysurf® PGI NOVUS

The New Form Talysurf® The New Original.

At the heart of the new Form Talysurf® PGI NOVUS is a ground-breaking dual bias gauge.

Buy with confidence.

The Form Talysurf® PGI NOVUS delivers class-leading:

One measurement, multiple results,
instant feedback.

Surface finish

Contour

Topography



The future of modern manufacturing.

Industry 4.0 philosophy is driving what has been called a 'Smart Factory' through the process of automation, data exchange and control in manufacturing environments.

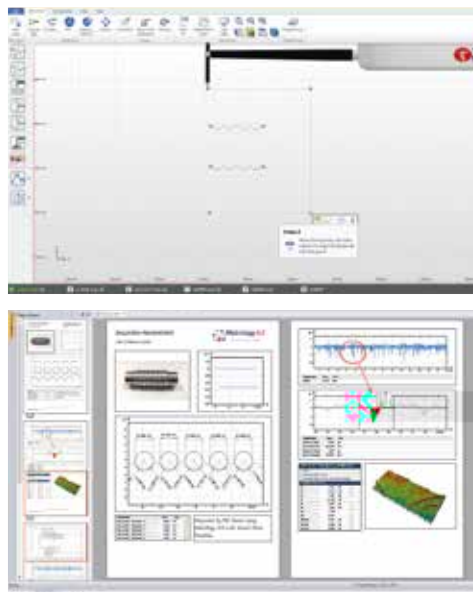
SMART Factory

The future of modern manufacturing. Industry 4.0 supported by Metrology 4.0

Metrology 4.0 software includes an intuitive, easy-to-use and modern production interface.



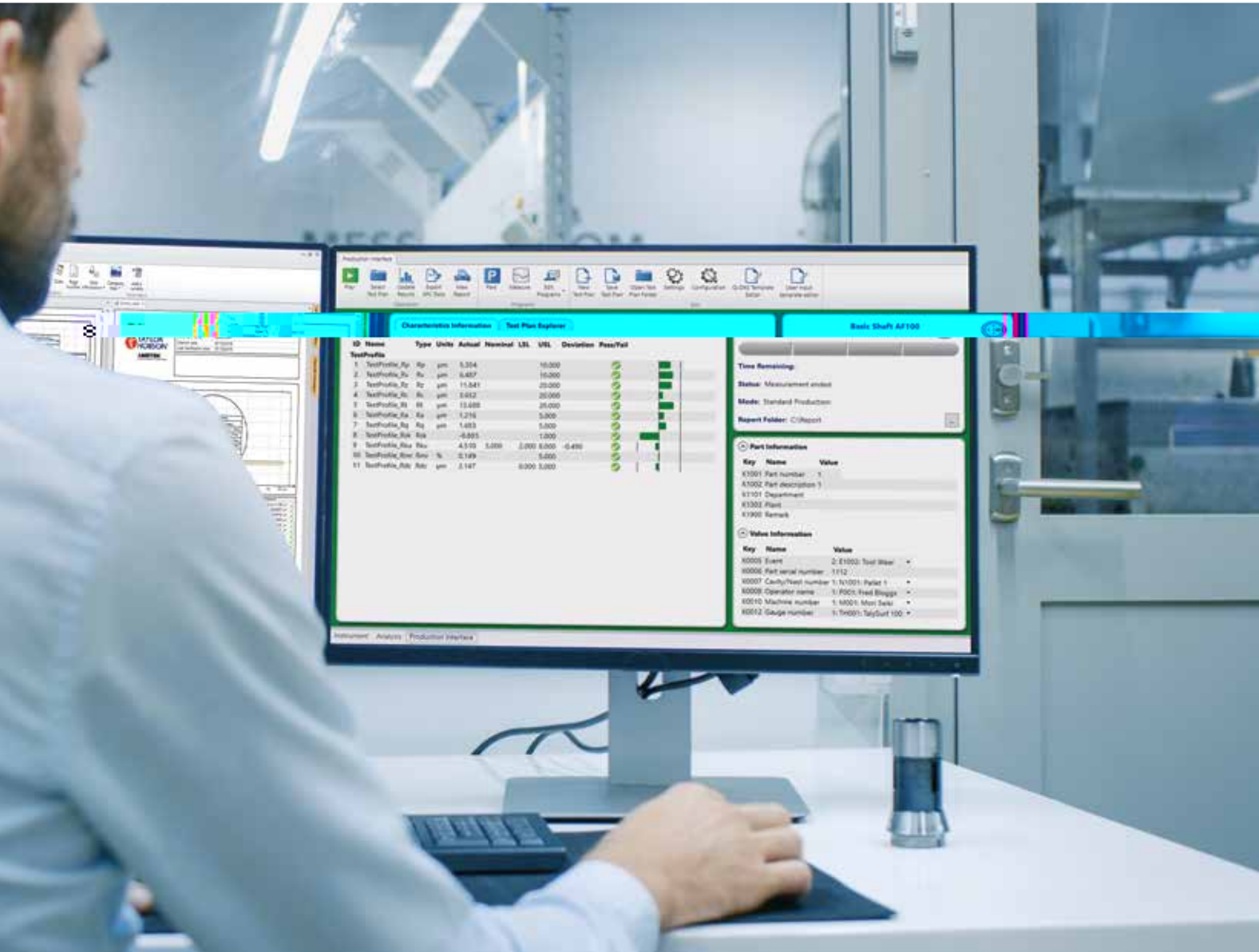
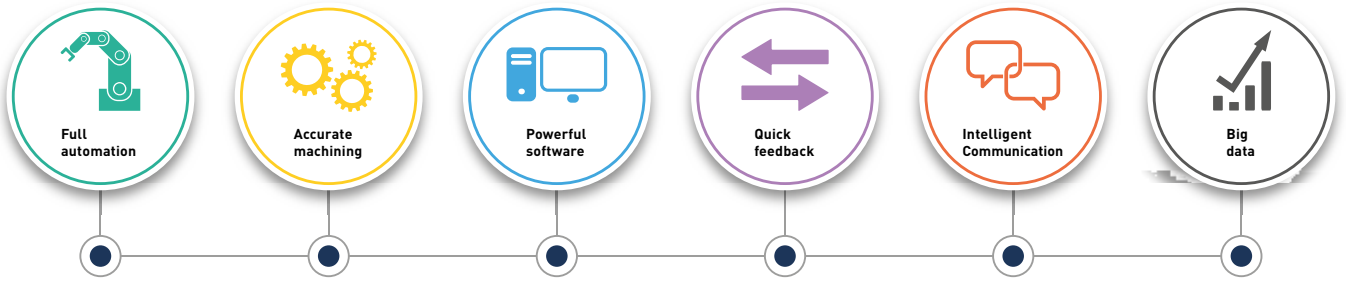
User benefits.



Remotely monitor results in Metrology 4.0 production interface

Taylor Hobson metrology directly monitoring production.
Modern manufacturing cycle.

- 1.
- 2.
- 3.
- 4.
- 5.
- 6.
- 7.



All of the critical components for the Form Talysurf® PGI NOVUS are manufactured in-house at our UK facility, with unique serial numbers for worldwide traceability.



"Our strong investment meets the demands of high technology manufacturing"

Tim Garner, Operations Director.
– Taylor Hobson Ltd.

Form Talysurf® PGI NOVUS

The New Form Talysurf®
The New Original.

Fundamental to any metrology system is the integrity and reproducibility of the results it delivers.



World-leading range with the PGI NOVUS gauge.

Verification of system measurement accuracy.

Diameter & angle capability with reverse bias gauge.

full

Using a 200 mm stylus provides

Gauge Range

20 15 10

20 mm

Resolution

S E C

0.2 nm

Bias

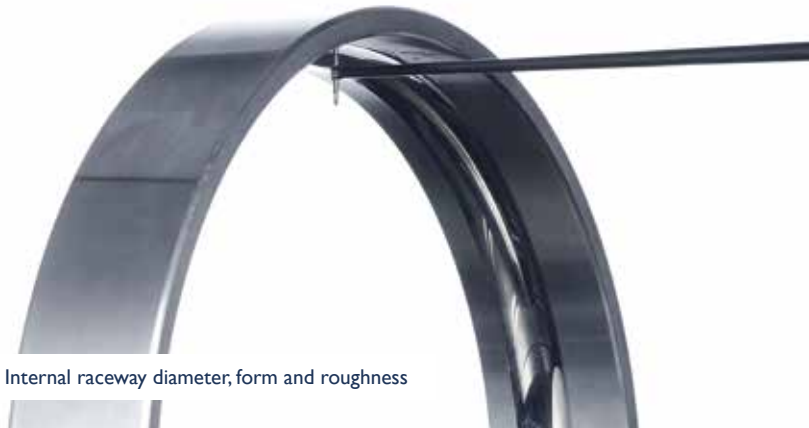
▲ ▼

Dual or single

Software



Metrology 4.0



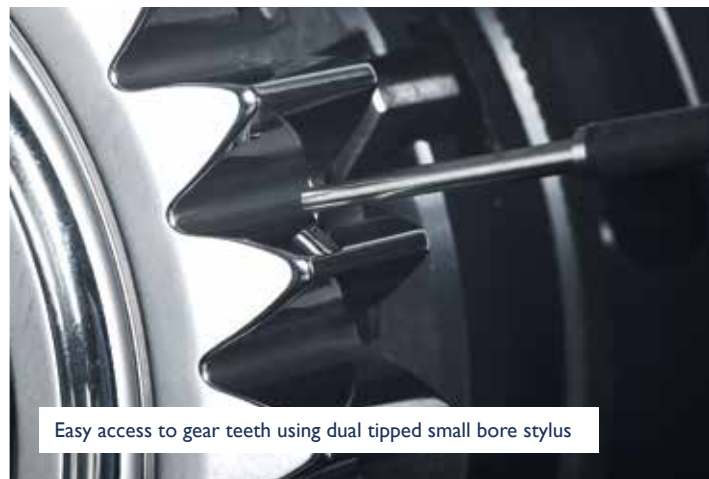
Internal raceway diameter, form and roughness



Reverse bias for PCD analysis along with gothic form and dimensions



Unparalleled diameter measurements to sub-micron accuracies



Easy access to gear teeth using dual tipped small bore stylus

Automated force control to ISO standards.

Automatic lift-lower.

World-leading resolution.

Gauge protection system.

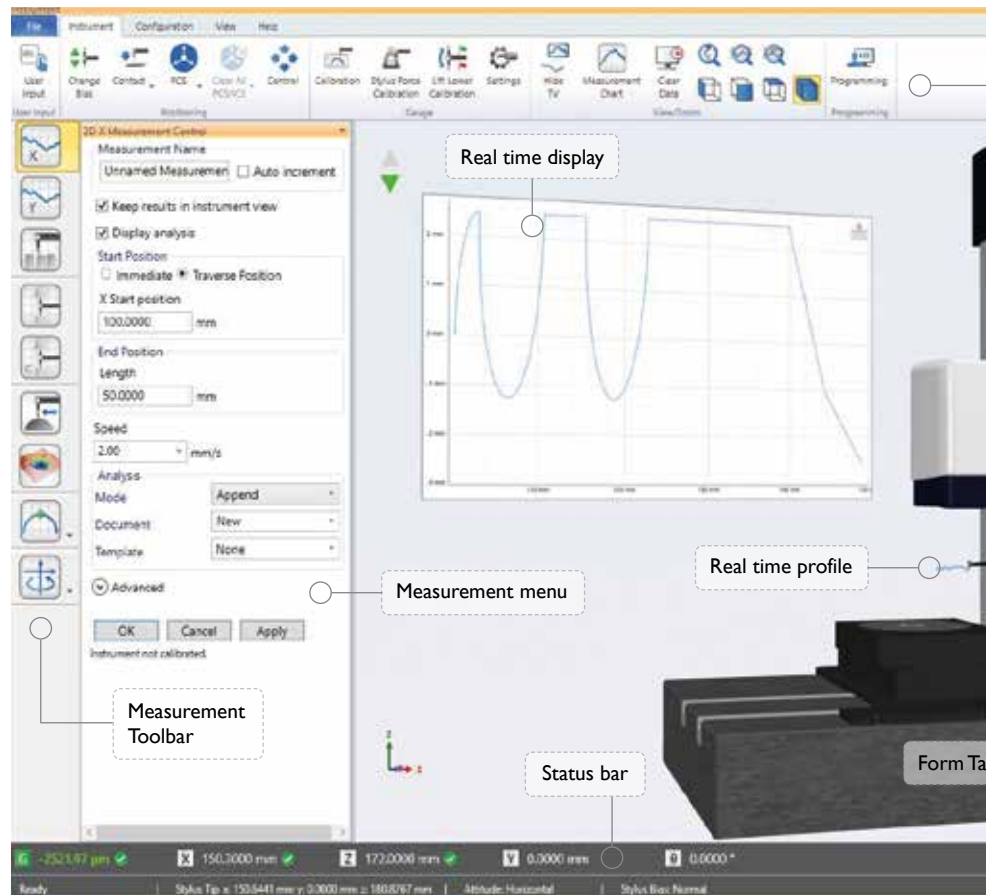


In so many ways, it's a first.
Advanced metrology, made simple.

Powerful, intuitive and easy-to-use.



Real time display.



Part Co-ordinate System (PCS).



Macros.



Calibration.



Media messages.



In so many ways, it's a first.
Advanced metrology, made simple.

One software platform does all.

Analysis options:



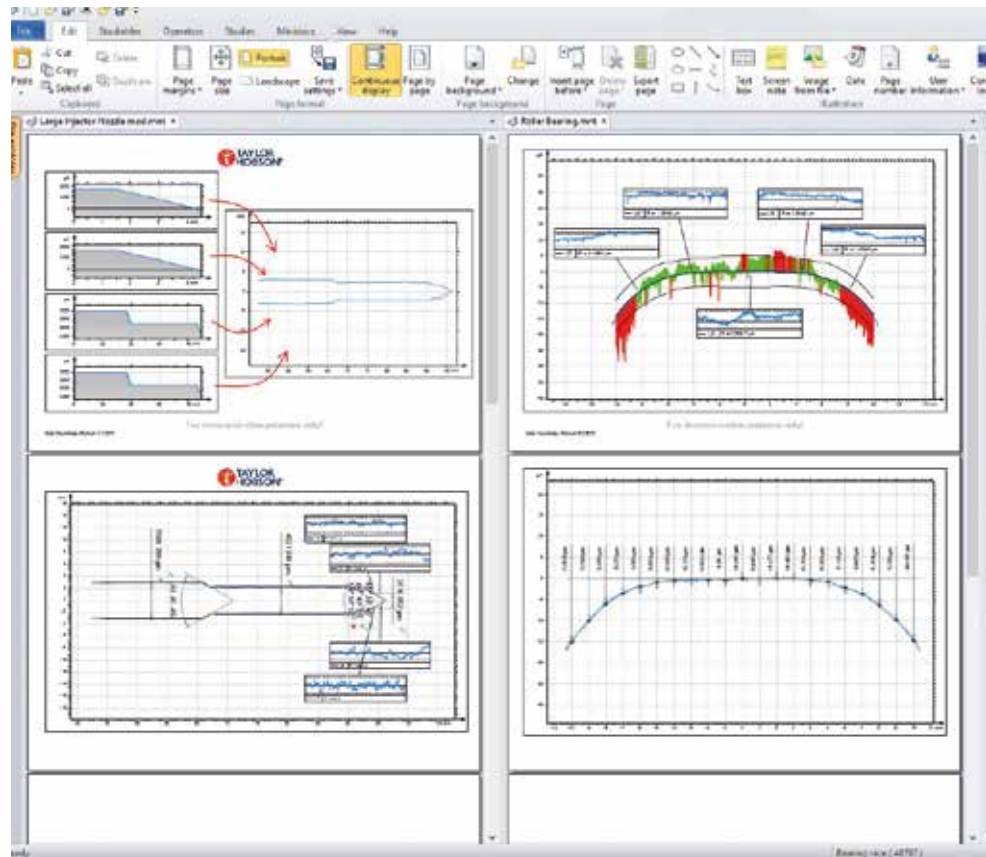
Surface finish



Contour



Topography



Contour analysis.

Critical analysis types.

Contour.

Surface finish.

Topography analysis.

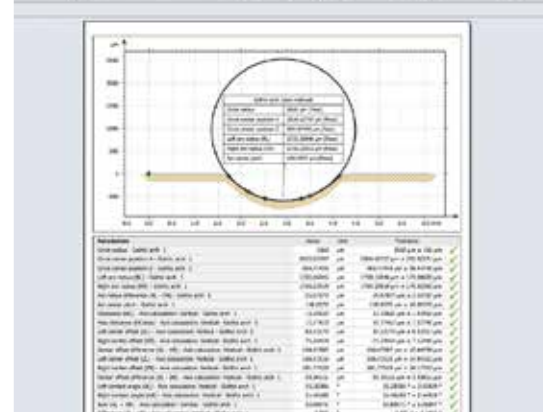
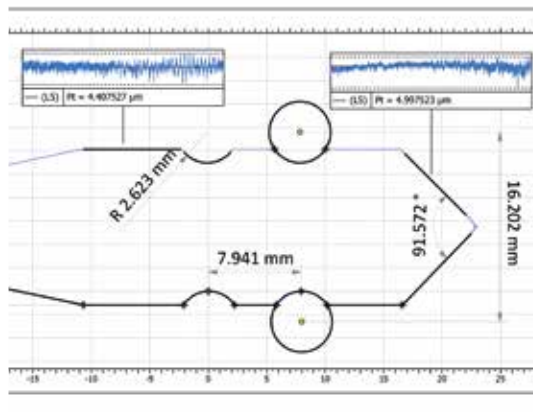
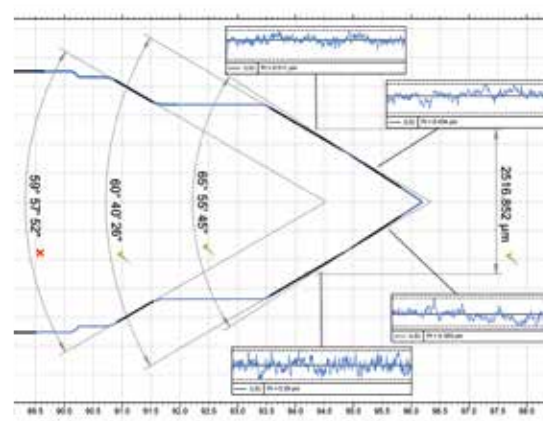
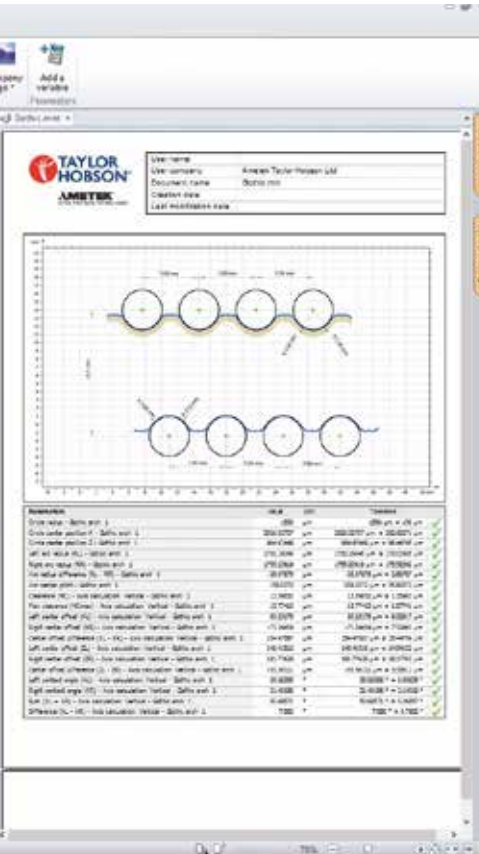
Critical analysis functions.

Topography.



Desktop publishing.

Benefits.



Feedback measurement control.



Customised analysis.

Feedback process.

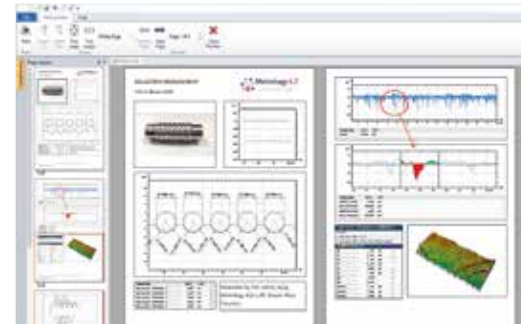
Design and program your own...

Applications



Ball screw axial measurement - both sides for PCD.

Analysis includes:

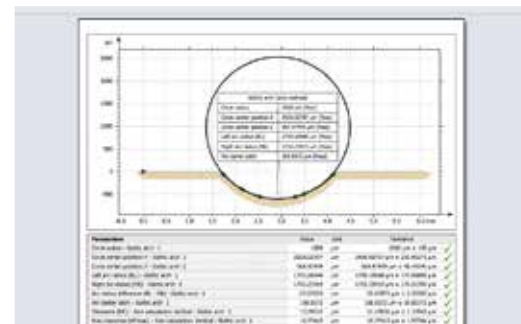
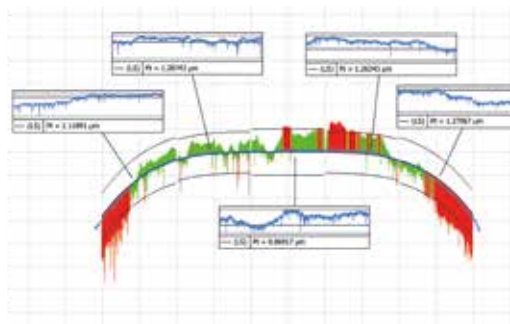
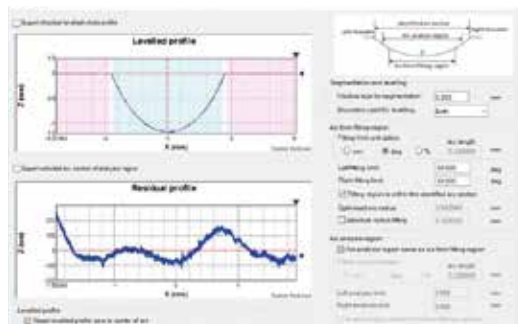


Bearings - spherical, roller and four-point contact.

Spherical bearing analysis includes:

Roller bearing analysis includes:

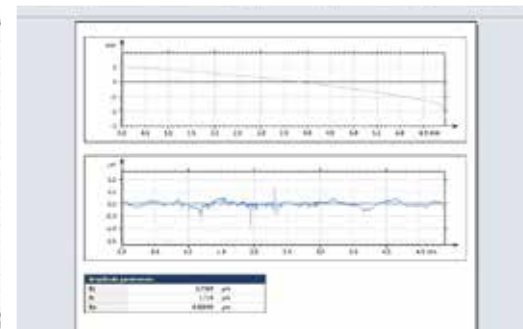
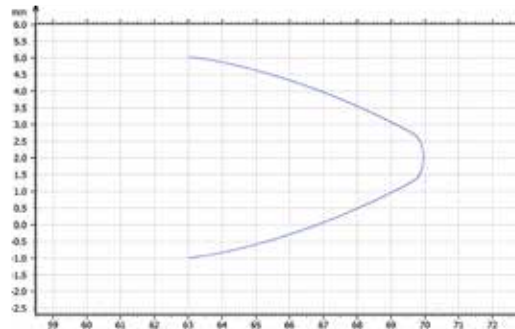
Four-point contact bearing analysis includes:





Gears - involute form.

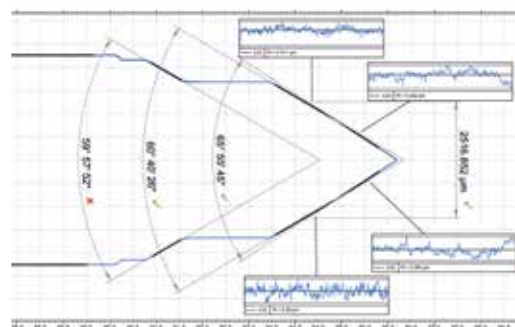
Analysis includes:



Fuel injectors - straightness and seat angle.

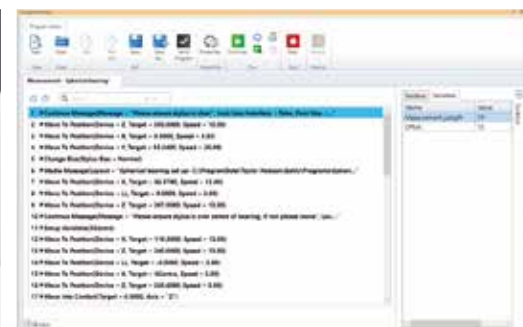
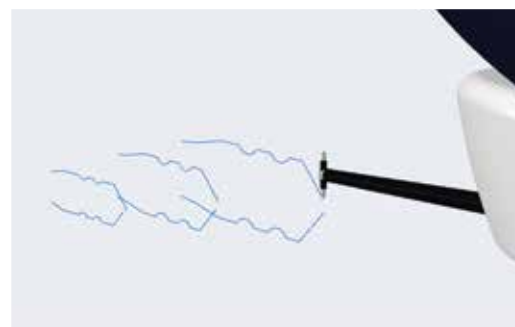
©

Analysis includes:



Multi-part measurement - using a single program.

Capabilities include:



Traceability



Full traceability to international standards.
Critical results, trust Taylor Hobson.



Traceability.

Arcuate correction.



Datum straightness.



Surface finish.

Step height.

Grating correction.

T:
E:
W:

Modular design

Designed to meet your individual requirements.
Performance in all environments.

Configurations.

1.  ©
2.  ©
3.  ©

Further versions



The Metrology Experts

www.taylor-hobson.com

Sales department

taylor-hobson.sales@ametek.com
+44 (0) 116 276 3771

- Design engineering
- Precision manufacturing

Centre of Excellence department

taylor-hobson.cofe@ametek.com
+44 (0) 116 276 3779

- Inspection services
- Metrology training
- Operator training
- UKAS calibration and testing

Service department

taylor-hobson.service@ametek.com
+44 (0) 116 246 2900

- Preventative maintenance



Taylor Hobson UK
(Global Headquarters)

Tel: +44 (0)116 276 3771
taylor-hobson.sales@ametek.com



Taylor Hobson China

Shanghai Office

Beijing Office

Chengdu Office

Guangzhou Office



Taylor Hobson Singapore



Taylor Hobson Thailand



Taylor Hobson Taiwan



Taylor Hobson Mexico



Taylor Hobson France



Taylor Hobson Germany



Taylor Hobson Italy



Taylor Hobson Japan



Taylor Hobson USA



Taylor Hobson India



Taylor Hobson Korea